



Acknowledgement of Country

Apologies

Paul Acfield, Sandy Ball, Greg Cashel, Bernadette Cranwell, Meg Easson, Chris Farren, Lara Lamnek, Jonathan Pope, John Roberts, Peter Watson

Present

Bert Brown, Deb Cashel, Kate Denton, Jim Douglas, Theo Ellenbroek, Fernando Gonçalves, Shelley Harington, Paul Laris, Becky Llewellyn, Andrea Rankin, Geoff Short, Richard Smith, Geoff Ward, Alan Young

Guest speaker

Chris Newby, Project Manager, Beach Management Review

Update on the review process

See Chris Newby's presentation: <https://wacra.org.au/news-events/meetings/>

Q: Will there be an attempt to work out the alternative cost of NOT taking action? It's an efficacy question – if something is less effective this implies costs.

A: Yes, that's true. There is not an attempt to do that – the 'do nothing' option is off the table. But if the community really wants it, we will consider it. An economic analysis hasn't been done for a number of years. Retreat/relocation is also not a good option.

Q: Re the independent advisory panel, how will it be staged? 5 mins, or more?

A: TBD by the panel – but likely to be a SCAP-stye environment to give everyone the opportunity to speak. We will try to make a balanced recommendation. Does that mean you want a more fulsome discussion?

Q: 5 mins is not long enough. There is only one scientist on the panel. We want to make sure that the panel looks at the science.

A: A SCAP does provide opportunity for a discussion that takes 20 mins. There needs to be fairness and equity but it is up to the panel to decide how many verbal representations etc. There is a whole raft of feedback that should guide decisions. I plan for a full submission and 5-10 mins verbal presentation in support.

Q: Has there been any analysis from a carbon accounting perspective (eg trucks, building a wall etc)? It's a huge carbon imprint. I would like to see that in future work.

A: That hasn't formed part of the intended analysis as yet. Bluecoast are talking in umbrella terms at this stage. That analysis will form part of their analysis in the long term. I take your point that there is a need for a good understanding of environmental impacts relating to emissions.

Q: The coast is dynamic so measures need to change dynamically as there are many factors. Do we know enough to do anything that we can be sure of? Whatever we do, we may well have to change it and when will we know that, and when will that be built into decisions?

A: Projections of the future are based on modelling – looking at past data and influencing factors – historical factors are in play. There are significant forces impacting daily, weekly, monthly (etc) data. It's certainly a challenge. The cycle of government is such that 25-50 years into the future is quite a timescale. What do we do for the future, is it flexible enough, how soon will we need to revisit it? We can do lots of modelling but can't always anticipate the results. Flexibility and adaptability are key. Complementary measures need to support what we do now.

Finance Report

Theo Ellenbroek reporting

Balance at start of June: \$2890 + credits (membership renewals) \$250

Current balance: \$3140

Membership renewals are due at the end of June.

Climate Matters group report

Julie Whitehead reporting

See attached report at the end of these minutes for full details

New group: South Australians for Climate Action: <https://southaustraliansforclimateaction.org/>

'We call on the South Australian government to lead a powerful response to climate change.'

Coast path consultation update

Bert Brown reporting

See attached report at the end of these minutes for full details

WACRA attended a workshop and we were told that we could not discuss where the outline of the path would go. Our concern was that it would go right through the middle of the dunes. We have written to Minister Nick Champion but have had no response as yet. We have also spoken to Jon Whelan (Chief Executive, Department for Infrastructure and Transport) putting our case forward – we thought the consultation process would continue. The government seems to think they have done appropriate consultation with Bicycle SA etc although this doesn't seem to be the case. A group of residents seems to have made it clear that they don't want the pathway near their houses. The impact of destroying the dunes is already obvious. We have asked for a site consultation. The Office of Design and Architecture are suddenly in play since Jon Whelan got our letter.

The proposal from Hillview Road onto Seaview Road behind houses and then back onto Bournemouth Street would be costly, and is bizarre and not accessible for many.

Recent changes to penalties on the rights of protest

WACRA undertook actions re this legislation. We understand there is still action that will be carried forward by unions and other groups. Any comments? It's a work in progress – the legislation has been passed.

Report on budget deliberations by Corporate Services Committee

Marty Cielens reporting

Marty attended council's Corporate Services Committee meeting Monday 5 June, looking at the budget recommendations which will be considered by council Tuesday 13 June. Note that they look at all input from the community.

\$500,000 earmarked for carbon offsets expenditure was removed from the budget. There was an attempt by a number of councillors to get that expenditure allocated to trees but it was voted down. This committee reports to council. The only way to try to change these recommendations is by talking to our ward councillors to try to influence them.

The residential rate rise is 7.57%. That is high compared to some councils. There is a higher rate rise for commercial/industrial rates. What are other councils doing? We would hope they are making concessions for lower socio-economic residents. It would be good for WACRA to have an understanding of how money can be managed instead of having to suffer the decisions of the RBA. 40% of council's budget is salaries and this is pegged to inflation. The only way they could change their budget is by getting rid of staff. Material costs are also escalating. There is pushback re planting street trees in some areas so they are going to focus on reserves and other council-owned land.

They are making an investment in looking after the trees they plant.

Q: Has council indicated what strategies they are going to use to economise?

A: The only discussion was the operating expenses at the meeting – grants, ward allowances etc. They were talking about minuscule cuts, not really big cuts.

Q: They ditched the carbon offsets, but have they provided any alternative re providing a carbon reduction?

A: I think they've pushed the timeline out. They are also looking at planting trees with other councils.

Discussion

It is disappointing to WACRA that they are not looking at absolute needs. How do we start to influence councillors who are putting up budgetary bids? Some of these bids are wants rather than needs. There needs to be more fine tuning by senior staff in working with elected members when they are setting budgetary bids. It will be difficult for Corporate Services to knock over some of these bids. In the next 9 months, we need to work out a strategic plan for how we are going to have more effective input into the budget in the future. Big issues are not being addressed.

Fully endorsed – our council has been able to ride roughshod over residents' views. WACRA has tried very hard to make well researched points to get council to look at climate change as the biggest issue. We need to consider a government relations strategy that enables us to elbow into this. We have been disenfranchised.

The WACRA submission lodged to the beach management review will be a public document. It addressed the climate change question. So far, the impression is that climate change is not in the equation as strongly as it should be. They need to focus on the *most aggressive* of the metrics. This point was made at the beach management workshop.

Current & upcoming community consultations – City of Charles Sturt

Your say – the following issues are listed: <https://www.yoursaycharlessturt.com.au/>

- Community plan review (upcoming)
- Arts & Culture plan (upcoming)
- Improving public infrastructure (upcoming)
We are urged to take the survey about this. *Kaleidoscope* mentions it.
- Playground renewals
- Gleneagles reserve stormwater management and upgrade

Other business

Henley Library and Community Hub

Q: What is happening re this development?

A: They are progressing. They will tell us in July. They are struggling with the rapidly escalating costs of construction.

Street trees

Suggestion to put a flier in people's letterboxes (these are available tonight and also on the WACRA website <http://wacra.org.au/new/wp-content/uploads/2020/08/street-trees-July-2020.pdf>). Also, we plan to create a flyer re praising people for having trees in their yard.

Meeting closed 9.20pm

Next meeting

Thursday 7 September 7.30-9.30pm <https://wacra.org.au/news-events/meetings/>

Reports

Climate Matters Group (CMG) Report

The major projects for the CMG are the MTP (My Tree Project), CERP (Climate Emissions Reduction Project), working jointly to save the Pinary in West Lakes, and participation in a newly formed group South Australians for Climate Action.

My Tree Project (MTP)

For those of you not familiar with this project it began in 2021 with students from three western primary schools being invited to grow a tree at their school, community or home as well as create an artwork about what a tree means to them. It enabled students to take positive action in mitigating the effects locally from climate change. Two primary schools, Kilkenny and West Beach, completed the project with students propagating, nurturing, then planting trees and understory on Schools Tree Day in July last year, followed by an exhibition of students' artworks at the Charles Sturt Council Civic Centre for the month of SALA. The MTP was awarded Charles Sturt Council's Community Event of the Year as well as South Australia's Community Event of the Year 2023. You can learn more about the project on WACRA's website.

The team has been meeting to discuss the next version and sustainability of the MTP. We aim to expand our Kurna connection and input, increasing cultural education.

We are also developing a more detailed application of the MTP to the regular school curriculum showing its comprehensive benefits. We will present this to three western primary schools to be invited to participate. Kilkenny and West Beach primary schools wish to stay involved.

A documentary is planned that along with written material can assist schools and communities to independently adopt the MTP process.

First, we need funding and are applying now for sponsorship.

CERP (Community Emissions Reduction Program)

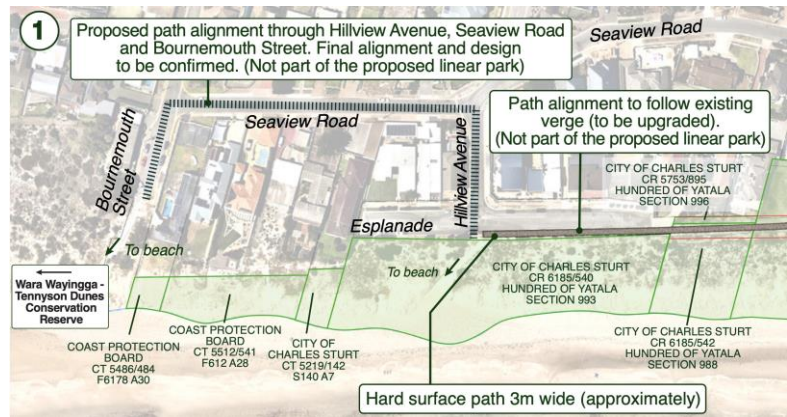
CERP is a community group that formed following a council-led workshop late last year looking at community input into ways for emissions to be reduced in the city of Charles Sturt. CMG members attend with Kate Denton participating in the Greening Group and Shelley Harington in the Buildings and Development Group. Transport and Sustainable Lifestyle are other areas being considered. WACRA's next *Messenger* will have a summary of the group so far.

Diversion from the coast on to Seaview Road

As the plan currently stands, Section 2 of the pathway does not follow the coast for its entirety. Between Hillview Avenue and Bournemouth Street in Tennyson, the path is diverted away from the coast on to Seaview Road. This decision is at odds with the goals of the coast path.

We believe there is adequate space for a boardwalk path along the dune in front of the six private houses along this approximately 200 metre stretch.

Contrary to advice that we have had from Charles Sturt Council, the property boundaries on these titles do not extend to the high-water mark. Lands Title Office advice is that the land for the coast path along the dunes is held by the Coastal Protection Board and the City of Charles Sturt.



The Seaview Road diversion would involve:

- significantly widening pedestrian access on Hillview Avenue, Seaview Road and Bournemouth streets
- undergrounding power lines along that stretch
- narrowing the section of Seaview Road and converting it to one-way traffic
- ensuring path safety and visibility for residents' vehicles reversing across the 'coastal' path from 15 driveways
- grading the steep slope up to Seaview Road on Bournemouth Street from the coast path to comply with disability access standards.

The accessibility and safety issues are of particular concern. The coast path is used by people with mobility aids, elderly pedestrians, cyclists, young children on bikes and scooters, and families with children in prams. We fear for residents backing out of their garages and random inattention by coast path users. Nowhere else on the coast path are people subject to this level of risk from vehicles crossing the path.

The alternative along the dune would consist of approximately 200 metres of boardwalk to maintain the path on the seafront. At its narrowest point, the space on the dune for a pathway is 6.3 metres and mostly it is much wider. The Department for Infrastructure and Transport has advised us that the width of the dune does not provide an adequate 80 cubic metre buffer. We believe this is something that will need to be remedied regardless of where the path goes.

We are very concerned that a 'Coast Path' from Marino Rocks to Outer Harbor that deviates away from the coast at this point only to avoid going in front of six private houses makes a mockery of the whole concept of a public coastal path. The Coast Park is a major asset to South Australia, and a drawcard for tourists. There has not been effective consultation by the department with all key community stakeholders on this diversion decision.

Contact your local MP and ask them to ensure we have a coast path that stays out of the dunes and does not divert onto Seaview Road.

Matt Cowdrey OAM	colton@parliament.sa.gov.au	8353 1111
Peter Malinauskas	croydon@parliament.sa.gov.au	8346 2462
Stephen Mullighan	lee@parliament.sa.gov.au	8449 4288
Tom Koutsantonis	westtorrens@parliament.sa.gov.au	8234 0777